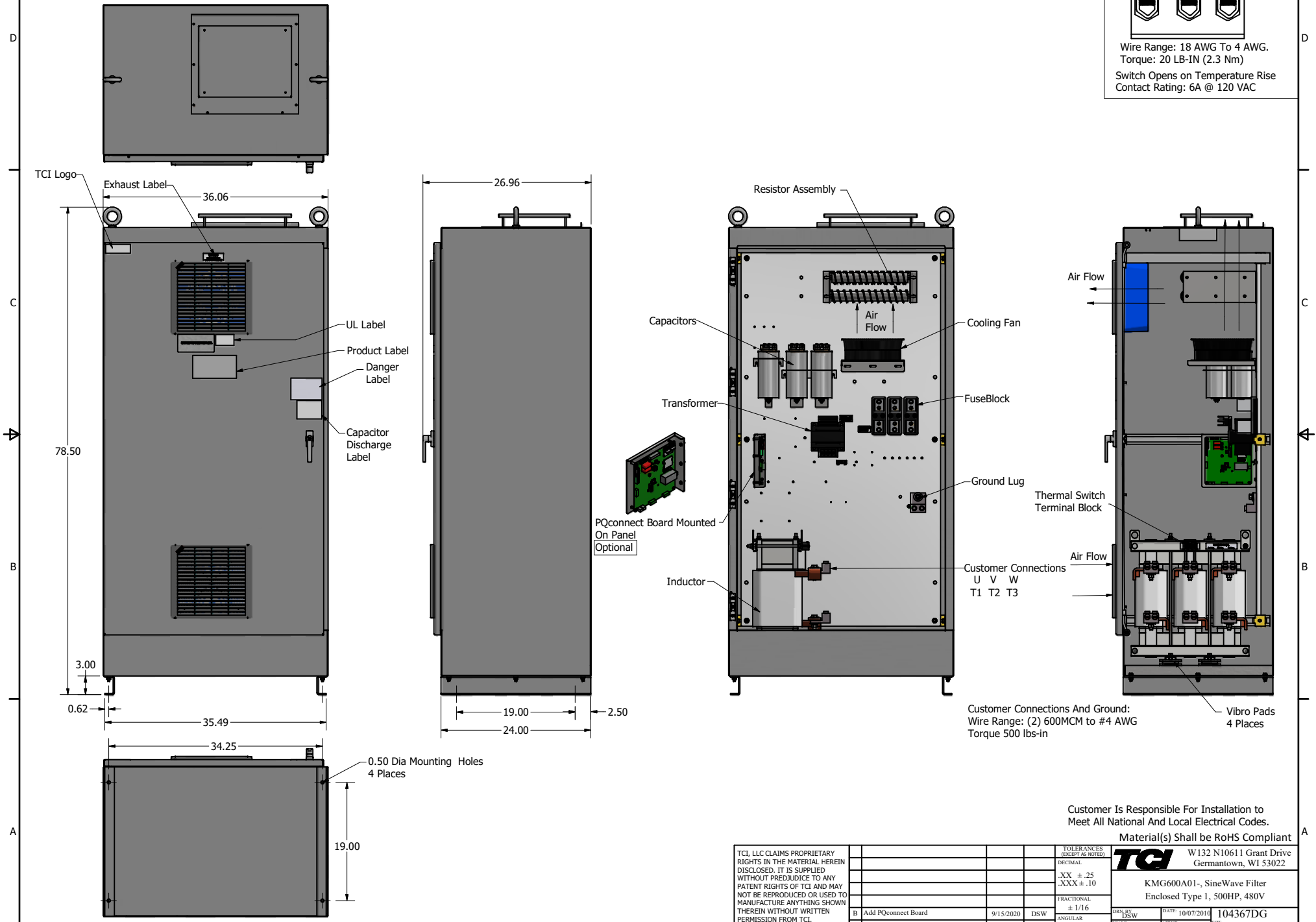
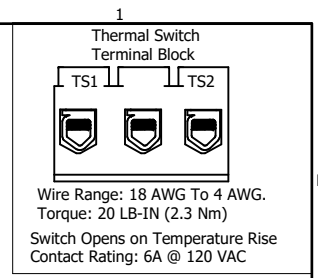


SineWave Part Number	Schematic Drawing#	Approx Weight (LBS)
KMG600A01A	24281-3A	975
KMG600A01P	24281-3P	980

HorsePower (HP)	kVar	Max Amps	Voltage (V)	HZ	Phase
500	50	600	480	60	3



Customer Connections And Ground:
Wire Range: (2) 600MCM to #4 AWG
Torque 500 lbs-in

Vibro Pads
4 Places

Customer Is Responsible For Installation to Meet All National And Local Electrical Codes.
Material(s) Shall be RoHS Compliant

TCI, LLC CLAIMS PROPRIETARY RIGHTS IN THE MATERIAL HEREIN DISCLOSED. IT IS SUPPLIED WITHOUT PREJUDICE TO ANY PATENT RIGHTS OF TCI AND MAY NOT BE REPRODUCED OR USED TO MANUFACTURE ANYTHING SHOWN THEREIN WITHOUT WRITTEN PERMISSION FROM TCI.					TOLERANCES (EXCEPT AS NOTED) DECIMAL .XX ±.25 .XXX ±.10 FRACTIONAL ± 1/16 ANGULAR ± 1°	TCI W132 N10611 Grant Drive Germantown, WI 53022 KMG600A01- SineWave Filter Enclosed Type 1, 500HP, 480V DWN BY: DSW DATE: 10/07/2014 104367DG SCALE: 1/5.5 DRAWN: CSE SHEET 1 OF 1
	B	Add PQconnect Board	9/15/2020	DSW		
	NO	REVISION	DATE	BY		